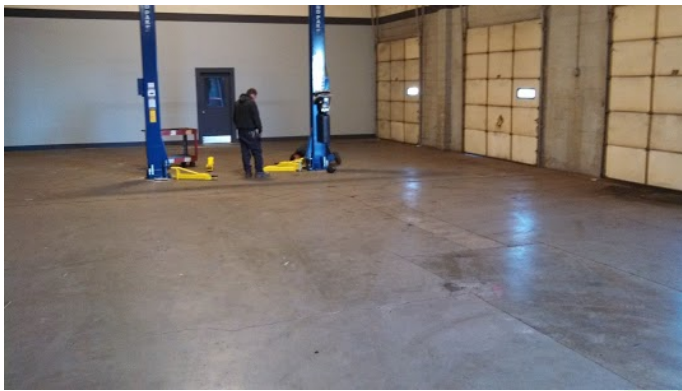




Concrete Coating and Repair Systems

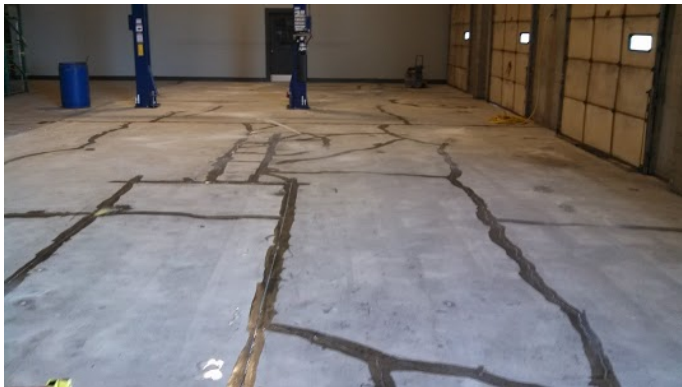
We have extensive experience with various repair methods that offer clients the most durable and aesthetic repair possible. We don't just "fill it". Our repair details are industry proven and specified on many commercial and industrial jobs



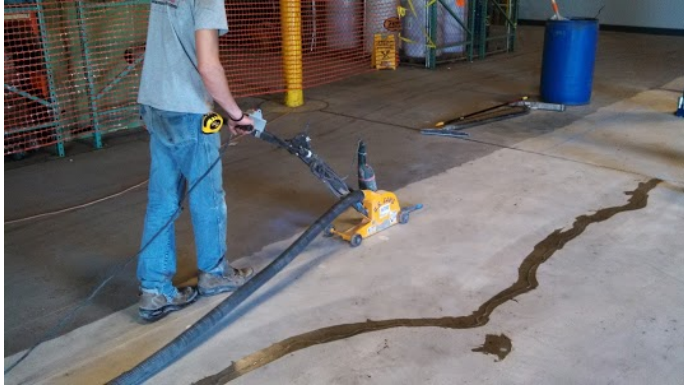
Before



All of our floors are prepped for proper surface profile. Machines are hooked to vacuums made for concrete grinding to control dust



Cracks are repaired with two component epoxy and structural urethane products



Joints can be sawed and filled with two component urethane joint fillers. They are cleaned with a joint saw prior to filling



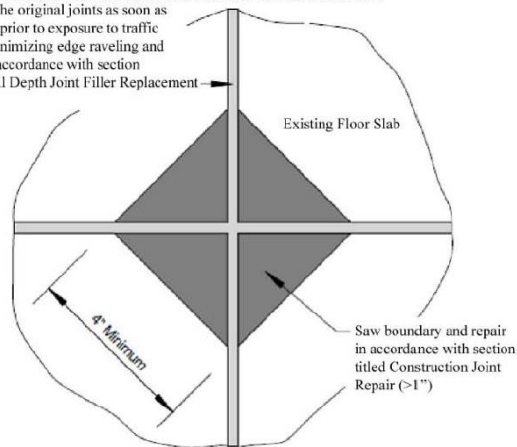
After.

We have many coating systems to match the needs of the clients use, budget, and time frames.

Repair details

ARMORED EDGE REPAIR AT SPALLED JOINT INTERSECTIONS

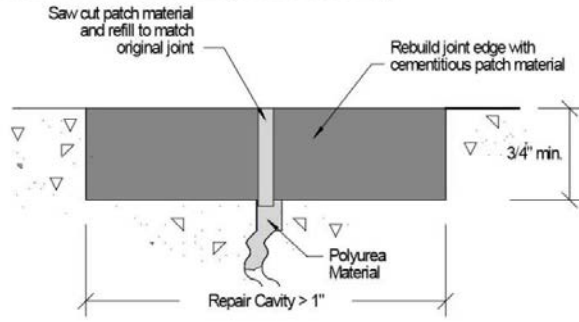
Re-saw the original joints as soon as possible prior to exposure to traffic while minimizing edge raveling and refill in accordance with section titled Full Depth Joint Filler Replacement



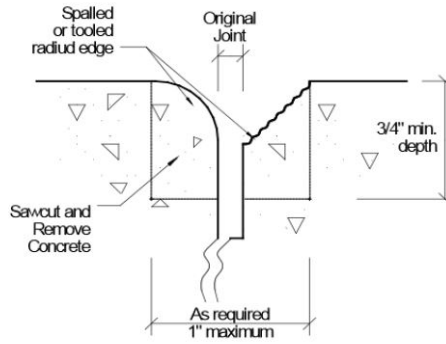
Inte

stems

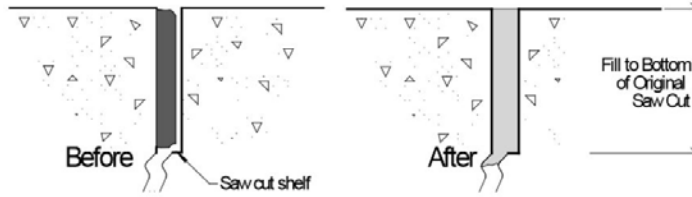
CONSTRUCTION JOINT REPAIR (GREATER THAN 1")



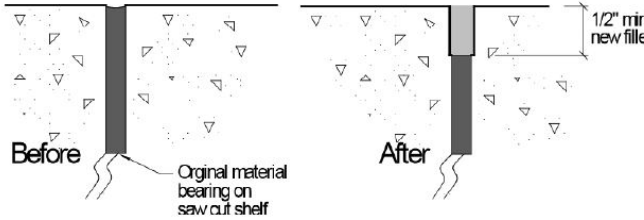
CONSTRUCTION JOINT REPAIR (LESS THAN 1")



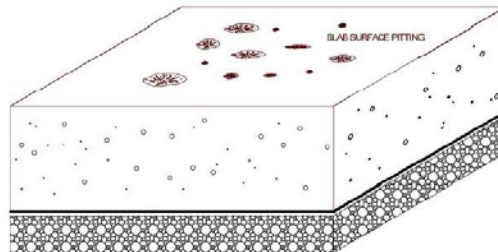
FULL DEPTH JOINT FILLER REPLACEMENT



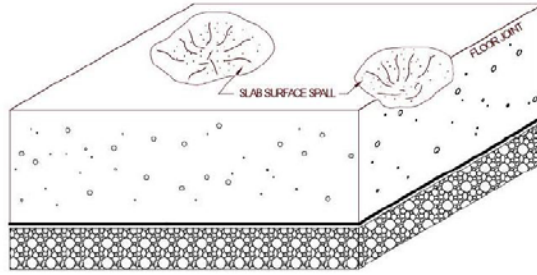
JOINT MILLING AND CAP FILLER REPLACEMENT



SURFACE PITTING REPAIR



SURFACE SPALLING REPAIR



Example



This client wanted and extremely large construction joint to “disappear”



No movement was detected in the joint. A special epoxy repair blend was applied after the proper prep work was completed.



After